


CAT5e Outdoor Shielded FTP Cable

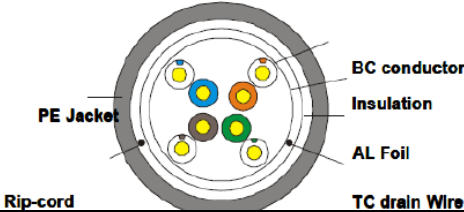

24AWG · 4 Twisted Pairs · Solid Copper · F/UTP ·
200 MHz · 10Gbps upto 20m tested 



Key Features:

- ✓ UV resistant PE Jacket designed to withstand sunlight, snow and ice.
- ✓ Bandwidth tested up to 200MHz
- ✓ Suitable for gigabit speeds –2.5Gbps up to 100m
- ✓ Suitable for 10Gbps up to 20m
- ✓ In compliance with ANSI/TIA 568.2-D
- ✓ Supports PoE and PoE+ (IEEE 802.3af/at) upto 30W and 300V DC
- ✓ Installation temperature: -30°C - +50°C

Technical Data:

Category	F/UTP CAT5e – 4P-PVC				
Test Standard	ISO/IEC 11801, TIA-568				
Conductor	Material	Solid Bare copper	Sheath Physical Properties	Before Aging: Tensile Strength (Mpa) ≥ 13.5 Elongation (%) ≥ 150 Aging Period (°C x hrs): 100 °C x 24hrs x 7d After Aging: Tensile Strength (Mpa) ≥ 12.5 Elongation (%) ≥ 125 Cold bend (20 ± 2 °C x4h) 8xcable O.D. No visible cracks Electrical Characteristics (20 °C) 1.0 – 100.0MHz: Impedance (Ω) 100 ± 15 1.0 – 100.0MHz: Delay Skew (ns/100m) ≤ 45 NVP: 69% Capacitance (nF/100m) max: 5.6 DC Resistance (Ω/100m) max: 9.5 DC Conductor Resistance Unbalance (%) max: 5.0	
	Nom. O.D (mm)	0.51 ± 0.005			
Insulation	Material	HDPE			
	Diameter	1.00 ± 0.03 mm			
Sheath	Thickness	0.55 ± 0.05 mm			
	External O.D.	6.2 ± 0.4 mm			
	Surface	Clean, Frap, Satiation			
	Material	HDPE			
Surface Printing	Color	Black			
	Letter height	3.0 ± 0.3 mm			
	Print Error & Space	≤ ±0.5%, 1 mm			
Core Color	1 White-Blue /Blue	2 White-Orange /Orange			
	3 White-Green /Green	4 White-Brown /Brown			
Packing	Reel				
Carton Dimension	35cm x 35cm x 20cm				
Packing Lenght	(500 ± 1.5)m				
Rip Cord	Yes				
Drain Wire	0.45mmTC				

Technical Performance (100m):

Frequency (MHz)	Return Loss \geq dB	Attenuation \leq dB	NEXT \geq dB	Phase Delay \leq ns
1	20.0	2.0	65.3	570.00
4	23.0	4.1	56.3	552.00
8	24.5	5.8	51.8	516.73
10	25.0	6.5	50.3	545.38
16	25.0	8.2	47.2	543.00
20	25.0	9.3	45.8	542.05
25	24.3	10.4	44.3	541.2
31.25	23.6	11.7	42.9	540.44
62.5	21.5	17.0	38.4	538.55
100	20.1	22.0	35.3	537.60
200	18.00	32.4	30.8	536.50

Frequency (MHz)	PSNEXT \geq dB	ELFEXT \geq dB	PSELFEXT \geq dB
1	62.3	63.8	60.8
4	53.3	51.8	48.8
8	48.8	45.7	42.7
10	47.3	43.8	40.8
16	44.4	39.7	36.7
20	42.8	37.8	34.8
25	41.3	35.8	32.8
31.25	39.9	33.9	30.9
62.5	35.4	27.9	24.9
100	32.3	23.8	20.8
200	27.8	17.7	14.7



Cable ID: CAT5E-STAND

Test Limit: TIA Cat 5e Perm. Link

Limits Version: 1.9500

Date / Time: 04/13/2021 09:15:28 AM

Operator: M.G.G

Headroom 6.5 dB (NEXT 1,2-7,8)

Cable Type: Cat 5e F/UTP

NVP: 69.0%

Main: DTX CableAnalyzer

S/N: 8991028

Software Version: 2.7800

Calibration Date: 02/14/2017

Adapter: DTX-PLA002

S/N: MC4T52L

Test Summary: PASS

Remote: DTX CableAnalyzer

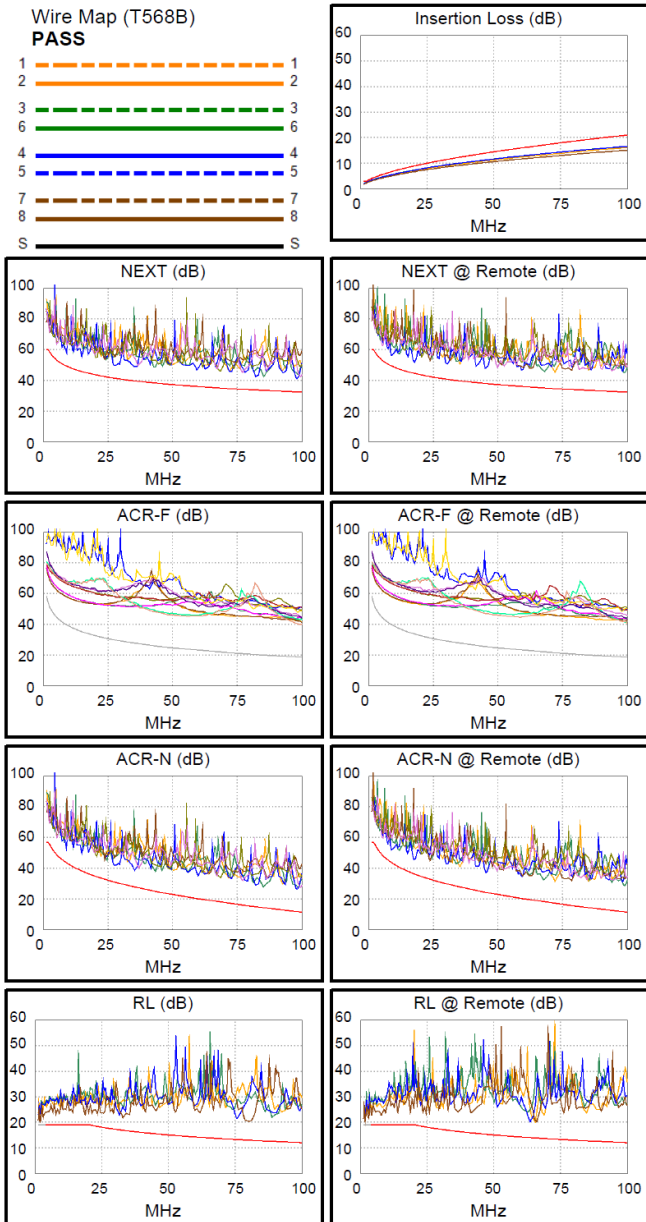
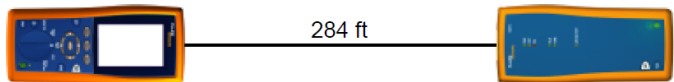
S/N: 8991027

Software Version: 2.7800

Adapter: DTX-PLA002

S/N: MC4T50L

Length (ft), Limit 295	[Pair 7,8]	284
Prop. Delay (ns), Limit 498	[Pair 3,6]	444
Delay Skew (ns), Limit 44	[Pair 3,6]	25
Resistance (ohms)	[Pair 3,6]	15.9
Insertion Loss Margin (dB)	[Pair 3,6]	4.5
Frequency (MHz)	[Pair 3,6]	100.0
Limit (dB)	[Pair 3,6]	21.0



Worst Case Margin Worst Case Value

PASS	MAIN	SR	MAIN	SR
Worst Pair	1,2-7,8	1,2-7,8	1,2-7,8	1,2-4,5
NEXT (dB)	7.3	6.5	8.8	12.6
Freq. (MHz)	35.5	8.8	98.0	99.0
Limit (dB)	39.6	49.4	32.4	32.4
Worst Pair	7,8	1,2	1,2	1,2
PS NEXT (dB)	9.2	8.9	9.8	12.4
Freq. (MHz)	35.5	8.8	98.3	85.5
Limit (dB)	36.6	46.4	29.4	30.4

PASS	MAIN	SR	MAIN	SR
Worst Pair	1,2-3,6	1,2-3,6	7,8-4,5	1,2-3,6
ACR-F (dB)	17.7	17.5	21.2	22.5
Freq. (MHz)	4.4	4.4	99.3	99.8
Limit (dB)	45.8	45.8	18.7	18.6
Worst Pair	1,2	1,2	4,5	7,8
PS ACR-F (dB)	18.4	18.4	22.3	22.6
Freq. (MHz)	1.6	1.8	99.0	99.3
Limit (dB)	51.4	50.8	15.7	15.7

N/A	MAIN	SR	MAIN	SR
Worst Pair	1,2-7,8	1,2-7,8	1,2-7,8	1,2-4,5
ACR-N (dB)	9.5	8.0	14.6	17.0
Freq. (MHz)	8.6	8.8	98.0	99.0
Limit (dB)	43.8	43.6	11.7	11.5
Worst Pair	7,8	1,2	1,2	4,5
PS ACR-N (dB)	11.5	10.1	14.6	18.3
Freq. (MHz)	5.1	8.8	98.3	99.0
Limit (dB)	45.7	40.6	8.7	8.5

PASS	MAIN	SR	MAIN	SR
Worst Pair	7,8	7,8	7,8	1,2
RL (dB)	3.6	3.4	7.0	6.0
Freq. (MHz)	4.0	7.6	80.8	65.3
Limit (dB)	19.0	19.0	12.9	13.9

Compliant Network Standards:
 10BASE-T 100BASE-TX 100BASE-T4
 1000BASE-T 2.5GBASE-T ATM-25
 ATM-51 ATM-155 100VG-AnyLan
 TR-4 TR-16 Active TR-16 Passive

