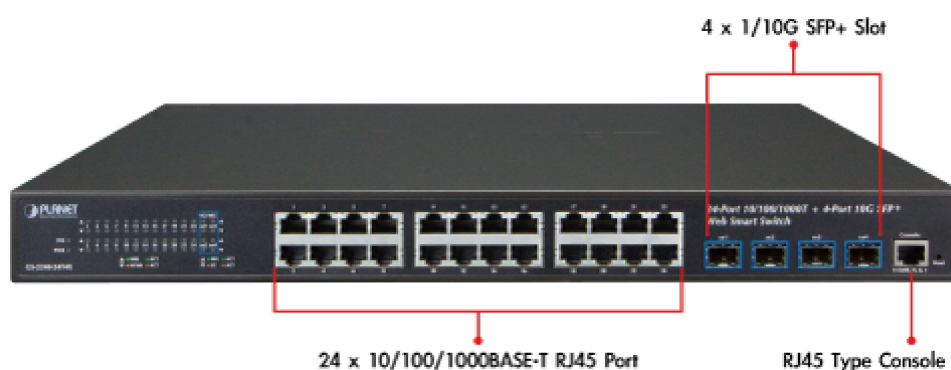



**GS-2240-24T4X** NEW
**24-port 10/100/1000T + 4-port 10G SFP+ Web Smart Switch**

[Overview](#)
[Applications](#)
[Key Features](#)
[Specifications](#)
[Download](#)
[Related Products](#)

### High-Density, Resilient Deployment Switch Solution for Gigabit Networking of Enterprise, Campus and Data Center

For the growing Gigabit network and IoT (Internet of Things) demand, PLANET has launched a new-generation **Web Smart 1/10 Gigabit Switch solution**, the GS-2240 switch series, to meet the needs of enterprises, telecoms and campuses for a large-scale network deployment. The GS-2240-24T4X is a Layer 2 Web Smart Switch, which comes with **24 10/100/1000Mbps Gigabit Ethernet ports** and **4 10G SFP+ uplink slots**. The GS-2240 switch series also provides a quick, safe and cost-effective 1/10G network solution for small and medium-sized businesses.

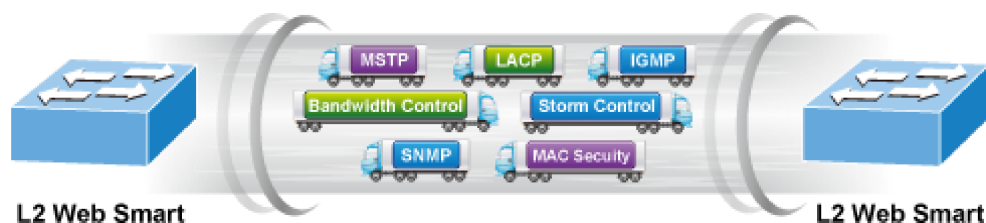


### Cost-effective 10Gbps Uplink Capacity

PLANET has made a big leap in the evolution of Ethernet with its launch of the GS-2240-24T4X whose four 10G SFP+ slots support **dual-speed, 10GBASE-SR/LR or 1000BASE-SX/LX**, meaning the administrator now can flexibly choose a suitable SFP/SFP+ transceiver according to the transmission distance or speed required to extend the network efficiently. They greatly support an SMB network to achieve 10Gbps high performance in a cost-effective way because 10GbE interface usually could be available in Layer 3 Switch, which could be too expensive to SMBs.

### Robust Layer 2 Features

The GS-2240 switch series can be programmed for advanced switch management functions such as **dynamic port link aggregation (LACP)**, **Spanning Tree Protocol (STP)**, **SNMP**, **bandwidth control**, **LLDP**, **DHCP snooping**, **IGMP snooping** and **L2 MAC security control**. The GS-2240 switch series provides **IEEE 802.1Q** tagged VLAN and **private VLAN**. With the supporting port aggregation, they allow the operation of a high-speed trunk by combining multiple ports and support fail-over as well.

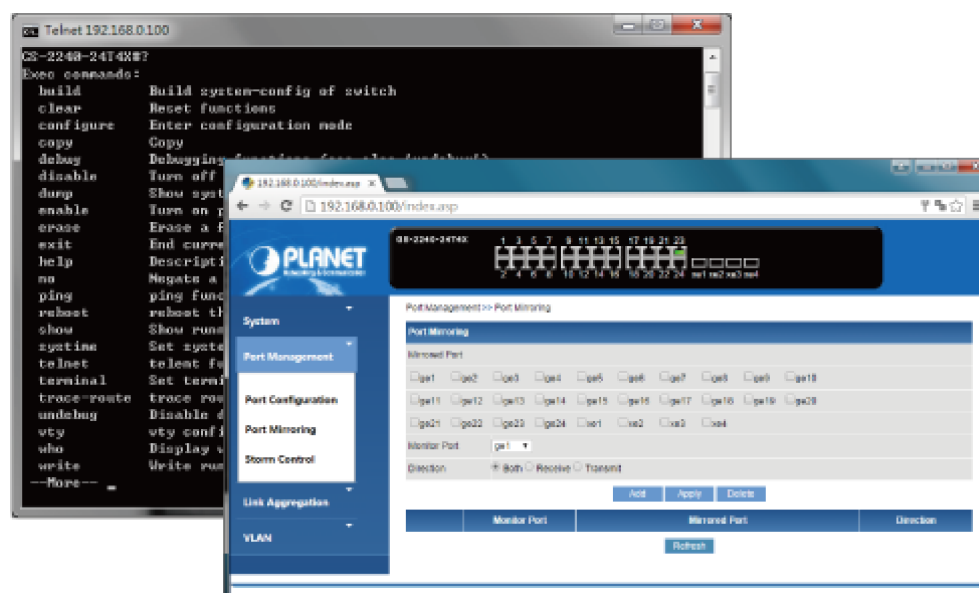


### Efficient Traffic Control

The GS-2240 switch series is loaded with powerful traffic management to enhance services to business-class data, voice, and video solutions. The functionality includes **broadcast, multicast and unknown unicast storm control**, and per port **bandwidth control**. It guarantees the best performance for VoIP and video stream transmission, and empowers the enterprises to take full advantage of the limited network resources.

### Friendly and Secure Management

For efficient management, the GS-2240 switch series is equipped with **web, console, Telnet** and **SNMP** management interfaces. With the built-in web-based management interface, the GS-2240 switch series offers an easy-to-use, platform-independent management and configuration facility. By supporting the standard SNMP, the switch can be managed via any standard management software. For text-based management, the switch can be accessed via Telnet.



### Ordering Information

**GS-2240-24T4X** 24-port 10/100/1000T + 4-port 10G SFP+ Web Smart Switch

### Accessories

<b>MTB-LR</b>	SFP+ Port 10GBASE-LR mini-GBIC Module (Single mode/310nm/max. 10km)
<b>MTB-SR</b>	SFP+ Port 10GBASE-SR mini-GBIC Module (Multi-mode/850nm/max. 300m)
<b>MGB-GT</b>	SFP-Port 1000BASE-T Module
<b>MGB-SX</b>	SFP-Port 1000BASE-SX mini-GBIC module
<b>MGB-LX</b>	SFP-Port 1000BASE-LX mini-GBIC module
<b>MGB-L30</b>	SFP-Port 1000BASE-LX mini-GBIC module - 30km

<b>MGB-L50</b>	SFP-Port 1000BASE-LX mini-GBIC module - 50km
<b>MGB-L70</b>	SFP-Port 1000BASE-LX mini-GBIC module - 70km
<b>MGB-L120</b>	SFP-Port 1000BASE-LX mini-GBIC module -120km
<b>MGB-LA10</b>	SFP-Port 1000BASE-LX (WDM,TX:1310nm) mini-GBIC module - 10km
<b>MGB-LB10</b>	SFP-Port 1000BASE-LX (WDM,TX:1550nm) mini-GBIC module - 10km
<b>MGB-LA20</b>	SFP-Port 1000BASE-LX (WDM,TX:1310nm) mini-GBIC module - 20km
<b>MGB-LB20</b>	SFP-Port 1000BASE-LX (WDM,TX:1550nm) mini-GBIC module - 20km
<b>MGB-LA40</b>	SFP-Port 1000BASE-LX (WDM,TX:1310nm) mini-GBIC module - 40km
<b>MGB-LB40</b>	SFP-Port 1000BASE-LX (WDM,TX:1550nm) mini-GBIC module - 40km
<b>CB-DASFP-0.5M</b>	10G SFP+ Directly-attached Copper Cable (0.5m in length)
<b>CB-DASFP-2M</b>	10G SFP+ Directly-attached Copper Cable (2m in length)

[Top](#)